

The HELLA logo is positioned in the top right corner. It features the word "HELLA" in a bold, black, sans-serif font. The letter "E" is stylized with three horizontal bars: a yellow bar on top, a red bar in the middle, and a blue bar on the bottom.

**HELLA**

The background of the entire page is a photograph of a modern building's exterior. It features a series of horizontal, dark-colored outdoor blinds or Venetian blinds. The blinds are partially open, allowing light to filter through. The building's facade is made of glass and metal. In the bottom left corner, there is a large, semi-transparent yellow triangle that overlaps the blinds and the text.

**LIGHT AND SHADE**  
Outdoor blinds & Venetian blinds

# CONTENTS

## Overview 4

Form and function

**Outdoor blinds with S-shaped slats 6** The prettiest shape to control the daylight

**Outdoor blinds with Z-shaped slats 8** The modern all-rounder

**Outdoor blinds with C-shaped slats 10** The proven classic

**Exterior Venetian blind 12 with C-shaped slats**

Soft lines thanks to flexible slats

**Quality in the details 14** Technical highlights

**Installation options 16** Front-mounted, façade and shaft systems  
Top boards and boxes

**Standard colors 18**  
For slats

**Smart Home System 22** ONYX

**The world of HELLA 28**  
Premium quality for generations  
Sustainability at HELLA  
From a single source





# FORM AND FUNCTION



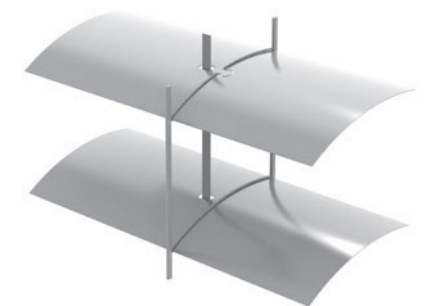
**Outdoor blinds with S-shaped slats**  
Elegant soft wave contour and perfect light control towards the inside.



**Outdoor blinds with Z-shaped slats**  
Light control with a modern geometric shape.



**Outdoor blinds with C-shaped slats**  
Edge-flanged and straight, simply elegant.



**Exterior Venetian blind – flat C-shaped slat** Soft lines thanks to flexible slats.

# OUTDOOR BLINDS WITH S-SHAPED SLATS

## The prettiest shape to control the daylight

The HELLA daylight control system regulates and distributes the daylight. It creates a comfortable atmosphere and, due to the less frequent use of artificial lighting, reduces energy consumption. The soft curved S shape is what gives this slat its name. The S-shaped slat for the outdoor blind was invented by HELLA, with the final development of the shape carried out in collaboration with an institute specialising in light. There is the standard variant of the S-shaped slat that measures 92 millimetres, and another with a slat

width of just 63 millimetres, which is perfectly suited to smaller recess depths with narrow wall constructions or for retrofitting. These outdoor blinds are provided with a stainless steel clip cam belt (ECN), make virtually no noise and are very wind-resistant. The innovative ECN system, which connects the slats, ensures the slats stack together neatly, a perfect loop formation and therefore reduces the packaging size to a minimum.



**AR 92 S ECN**

Elegant soft wave contour and perfect control of light towards the inside.

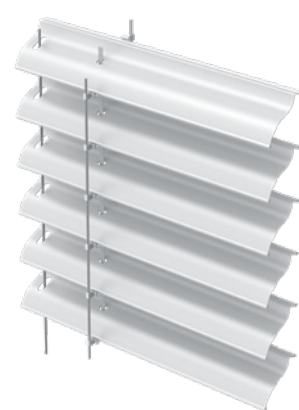


**AR 63 S ECN**

Perfect for narrow wall constructions or retrofitting.



**With guide rail**



**With cable guiding**



**Excellent closing characteristics**

Both slat profiles close quietly thanks to the built-in sealing profile and thus allow less light into the room.

Min./max. dimensions	AR 63 S ECN	AR 92 S ECN
min. width [mm]	450 (motor)/430 (crank)	450 (motor)/430 (crank)
max. width [mm] – single unit	5,000 (motor/crank)	5,000 (crank/motor)
max. height [mm]	4,200 (motor/crank)	5,200 (crank/motor)
max. blind area [m <sup>2</sup> ] – single unit	18 (motor)/14 (crank)	18 (motor)/14 (crank)
max. blind area [m <sup>2</sup> ] – group unit	22.5 (motor)/12.6 (crank)	22.5 (motor)/12.6 (crank)



# OUTDOOR BLINDS WITH Z-SHAPED SLATS

## The modern all-rounder

The high-quality HELLA outdoor blinds with Z-shaped slats are the perfect shading system for modern residential and office buildings. The design gives architects boundless inspiration, while its functionality affords the ultimate well-being and ease of use for users, as well as the ideal level of brightness.

The outdoor blinds with Z-shaped slats are not only available at a standard width of 92 millimetres, but there is also a smaller variant available with a width of 63 millimetres only. The innovative ECN system stacks the slats into a neat pile.



**AR 92 Z ECN**

Light control with a modern geometric shape.



**AR 63 Z ECN**

Perfect for retrofitting or for shallower recesses.



**With guide rail**



**With cable guiding**



**Excellent closing characteristics**

Both slat profiles close quietly thanks to the built-in sealing profile and thus allow less light into the room.

Min./max. dimensions	AR 63 Z ECN	AR 92 Z ECN
min. width [mm]	450 (motor)/430 (crank)	450 (motor)/430 (crank)
max. width [mm] – single unit	5,000 (motor/crank)	5,000 (crank/motor)
max. height [mm]	4,200 (motor/crank)	5,200 (crank/motor)
max. blind area [m <sup>2</sup> ] – single unit	18 (motor)/14 (crank)	18 (motor)/14 (crank)
max. blind area [m <sup>2</sup> ] – group unit	22.5 (motor)/12.6 (crank)	22.5 (motor)/12.6 (crank)

# OUTDOOR BLINDS WITH C-SHAPED SLATS

The proven classic



**ARB 80**

Edge-crimped and straight stacking on top of each other.



**With cable guiding**



**With guide rail**

The ARB 80 model is a proven classic. Like all HELLA outdoor blinds, it is made of a highly flexible special alu-minium alloy and has a convex-concave shape. The slats are flanged on the edges and rail-guided with alternating pins. The perforations, which are also flanged, protect the lift tapes and make plastic clips superfluous. This means

it is long-lasting, durable weather protection. On request, these external Venetian blinds can also be provided with a special turn for daylight control. The outdoor blind ARB 80 is also available with cable guiding as an alternative to the guide rail.

Min./max. dimensions	ARB 80
min. width [mm]	430 (motor)/420 (crank)
max. width [mm] – single unit	5,000 (crank/motor)
max. height [mm]	5,200 (crank/motor)
max. blind area [m <sup>2</sup> ] – single unit	20 (motor)/14 (crank)
max. blind area [m <sup>2</sup> ] – group unit	22.5 (motor)/12.6 (crank)



# EXTERIOR VENETIAN BLIND WITH C-SHAPED SLAT

## Soft lines thanks to flexible slats

The traditional Venetian blind with flat slats is available in widths from 60 to 80 millimetres. This solar and weather protection is delicate, lightweight and can be stylishly and architecturally integrated into most façades. Exterior Venetian blinds have an advantage over outdoor blinds due to

their compact package dimensions, and also provide first-class sun protection. The slats “bounce” back to their initial form in the event of wind load. Rail-guided flat slats are also available as an alternative to cable guiding.



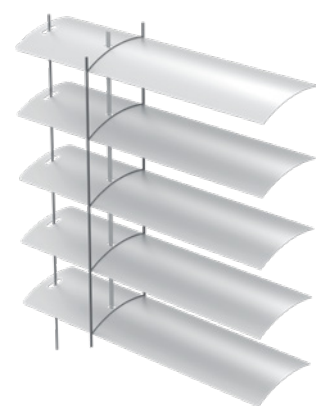
**AF 60**  
Exterior Venetian blind flat, 60 millimetres wide.



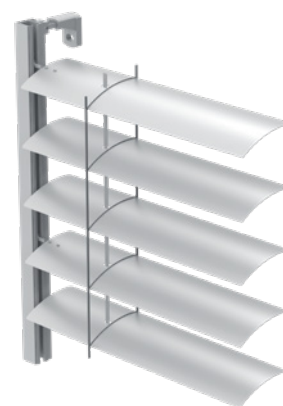
**AF 80**  
Exterior Venetian blind flat, 80 millimetres wide.



**AF 80 Plus**  
For tall installations and with additional wind stabilisation.



**With cable guiding**



**With guide rail**

Min./max. dimensions	AF 60 / AF 80	AF 80 Plus
min. width [mm]	490 (motor) / 485 (crank)	580 (motor)
max. width [mm] – single unit	5,000 (motor/crank)	5,000 (motor)
max. height [mm]	4,000 (motor/crank)	6,200 (motor)
max. blind area [m <sup>2</sup> ] – single unit	20 (motor)/14 (crank)	20 (motor)
max. blind area [m <sup>2</sup> ] – group unit	22.5 (motor)/12.6 (crank)	–





## Solar package

The solar package for exterior Venetian blinds does not require a power supply. This makes it independent, saves energy and makes a valuable contribution towards protecting the environment. The built-in solar panels generate electricity all year round and charge the battery even when the weather is slightly cloudy. It is controlled via a wall-mounted or hand-held radio transmitter.

The package for outdoor blinds consists of a 12-volt motor, radio receiver and the solar panel including battery. The package can be used for outdoor blinds and external Venetian blinds in the front-mounted system and façade system. Wall brackets are included in the package in the event of wall mounting. It can be used up to a maximum area of 18 square metres.



## SILENT packages

There are two packages to choose from that reduce vibrations and thus noise transmission into the mounting base.

The **SILENT package for guide rails** consists of the SILENT seal, the noise-reducing vertical bracket VT1G and one base for noise insulation.

The **SILENT package for cable-guided units** consists of a noise-reducing vertical bracket VT1G and the noise-insulating padding boards for the cable holders.

The **SILENT packages** for guide rails and cable guiding can be extended with a noise-reducing SILENT motor – up to a maximum of ten square metres of blind area – to create a **SILENT PLUS package**.



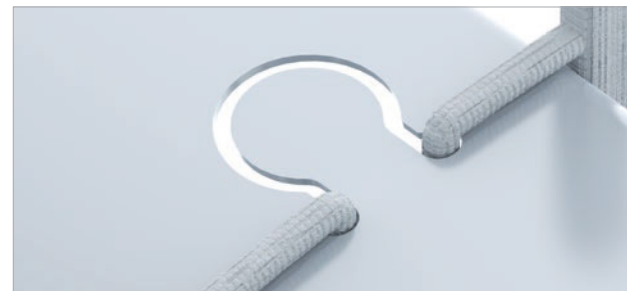
# QUALITY IN THE DETAILS

## Technical highlights



### Flanged perforations

The perforations protect the lift tape to ensure smooth running.



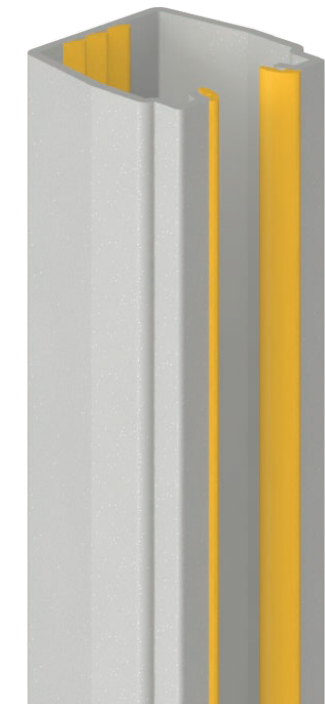
### Omega cutout

The ladder bar fixing with the Omega cutout for C-shaped slats guarantees safe closing and turning behaviour even in strong winds.

## SILENT seal

Integrated rubber dampers (highlighted in yellow in the illustration to the right) significantly reduce noise when the outdoor blind moves.

- Guide rail clip seal with softer rubber dampers extruded on to reduce noise
- available for all standard guides and flush-mounted guide rails
- available in black or grey
- maximum element width 3,000 millimetres



# INSTALLATION OPTIONS

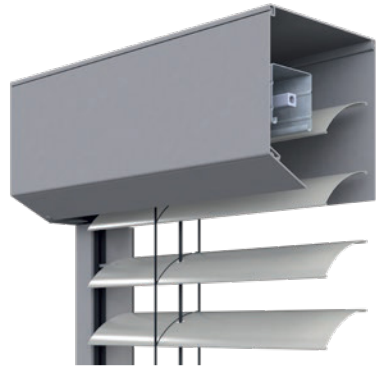
## Front-mounted, façade and shaft systems

HELLA has the right mounting variant for every installation situation. Front-mounted systems are suitable for retrofitting in new or old buildings as well as for integration into the thermal insulation composite system. Outdoor blinds and exterior Venetian blinds are supplied pre-assembled in the box for uncomplicated and quick installation. Insect screen systems can be integrated as an option. Façade systems are designed to be self-supporting for installation on mullion-transom façades. The self-supporting shaft systems are easy to install in shafts existing on-site and disappear into the façade when raised.



### Edged prefabricated system

For installation as a screen or with a plaster base for integration into the plaster façade.



### Extruded front system

For installation as a screen or with a plaster base with the same box appearance as the front-mounted roller shutter.



### Self-supporting façade system

Visible powder-coated box, especially suitable for retrofitting and mullion-transom façades.



### Shaft system 2.5

Suitable up to a width of 2.5 metres as a self-supporting installation in on-site shafts.



### Shaft system 4.0

Suitable up to a width of 4 metres as a self-supporting installation with a reinforced cover for on-site shafts.

## Top boards and boxes

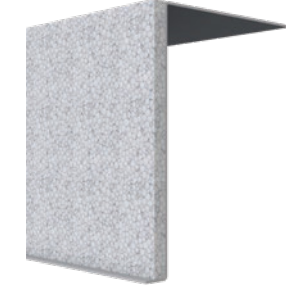
Top boards and boxes protect the HELLA outdoor blinds and exterior Venetian blinds and, due to their different forms and variants, they fit perfectly into the design of the façade. When fitted with plaster bases, the top boards and boxes integrate the sun protection seamlessly into the façade. In contrast to top boards, boxes are flush with the wall and are available not only with a surface that can be plastered but also with insulation that avoids thermal bridges and that complements the thermal insulation composite system seamlessly.



Top board



Box



Top boards and boxes with plaster bases



Box with insulation at the rear.



Box with insulation top and rear.



Box with plaster base with insulation top and rear.

## PACKAGE HEIGHT CALCULATOR

The package height calculator is a digital service tool that calculates the required package and shaft heights for outdoor blinds and exterior Venetian blinds. The specification of the package height is required to plan the recess and top board height; it specifies the height of the outdoor blind or exterior Venetian blind with raised slats. It depends on the complete height, the selected slat width and the slat shape.



# STANDARD COLORS

for slats



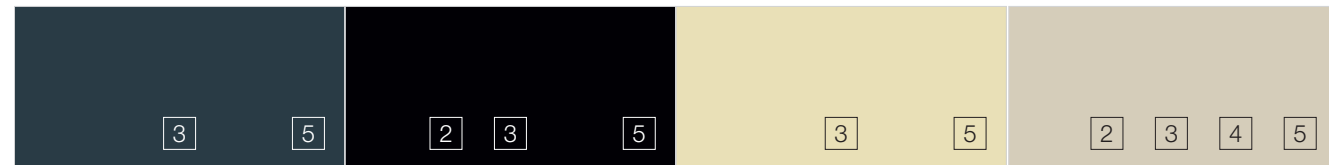
RAL 9016 **Traffic white**      RAL 9010 **Pure white**      RAL 9002 **Grey white**      RAL 7035 **Light grey**



RAL 7038 **Agate grey**      RAL 9006 **White aluminium**      RAL 9006M **White aluminium matt**      RAL 9007 **Grey aluminium**



RAL 9007M **Grey aluminium matt**      DB 703 **Anthracite iron mica**      DB 703M **Anthracite iron mica matt**      RAL 7016 **Anthracite grey**



RAL 7016M **Anthracite grey matt**      RAL 9005M **Jet black matt**      VSR 0240 **Light beige**      0003 **Beige**



VSR 0110 **Dark beige**      RAL 1007 **Daffodil yellow**      RAL 6005 **Moss green**      RAL 8014 **Sepia brown**



RAL 8019 **Grey-brown**      C31 **Pale bronze**      C32 **Light bronze**      C33 / VSR 0780 **Bronze**



C34 **Dark bronze**      C35 **Black**

## Anodised look

The slats in the colors C31, C32, C33, C34, C35 are lacquered in an anodised look. With regard to color shade and brightness, the slat colors can differ from the color of the anodised parts.

## Available slat shapes



1 **AF 60**  
Flat slat



2 **AF 80 or AF 80 Plus**  
Flat slat



3 **ARB 80**  
C-shaped slat



4 **AR 63 ECN**  
S- or Z-shaped slat



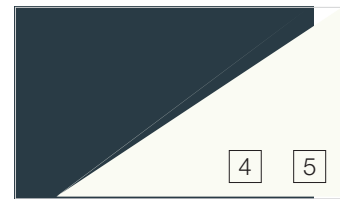
5 **AR 92 ECN**  
S- or Z-shaped slat

# COLOR HIGHLIGHTS

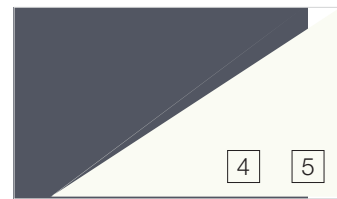
## Duplex slats

### Two-colored slats

Two-colored slats are a real highlight: the Duplex slat, dark on the outside and white on the inside. The advantage here is that the outer slat color matches dark window frames. At the same time, thanks to the white inside color, the room darkens less when the blinds are closed.



RAL 7016  
**Anthracite grey**  
RAL 9016 **Traffic white**

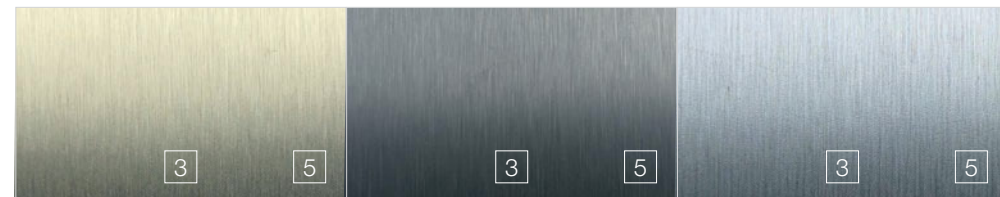


DB 703 **Anthracite iron mica** RAL 9016  
**Traffic white**

## Textured colors

### Anodised look

With regard to color shade and brightness, the slat colors can differ from the color of the anodised parts.



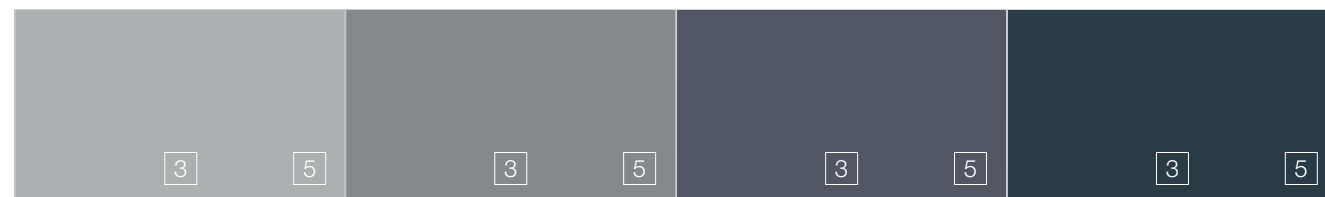
M 99702V  
**Gold**

M 99783V  
**Dark grey**

M 99773V  
**Natural**

## Titanium slat coating

### For easy cleaning



RAL 9006T  
**White aluminium**

RAL 9007T  
**Grey aluminium**

DB 703T **Anthracite iron mica**

RAL 7016T  
**Anthracite grey**



### Available slat shapes



3 **ARB 80**  
C-shaped slat



4 **AR 63 ECN**  
S- or Z-shaped slat



5 **AR 92 ECN** S- or Z-shaped slat



# SMART HOME SYSTEM



DISCOVER ONYX  
NOW

# ONYX

## The Smart Home System from HELLA

With ONYX, HELLA offers a smart home system that handles the digital operation of sun protection systems and controls energy input in buildings of any size. Sun protection solutions can be conveniently controlled via smartphone or tablet using an app, voice control or fully automatically.

By integrating sun protection products into the smart home, there is enormous potential for them to have a positive impact on a building's energy footprint. Maximum comfort, energy savings and sustainability can be achieved by networking with other building control systems such as those for heating or ventilation.



### For a smart home

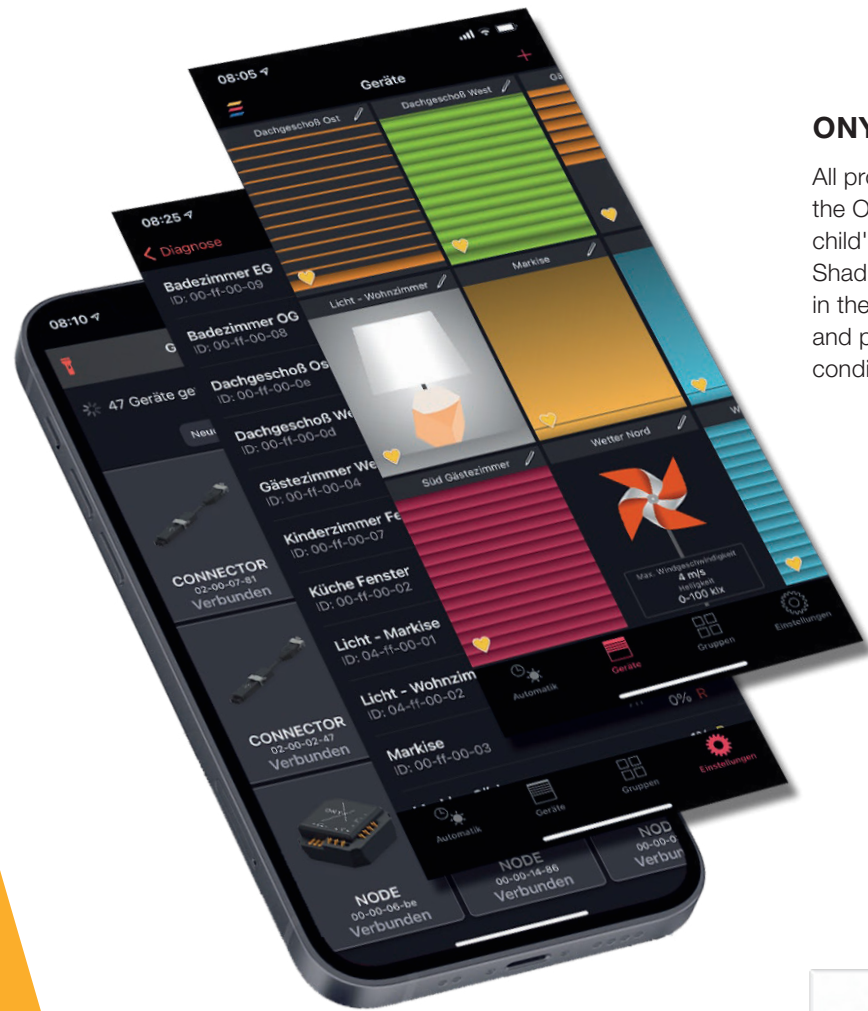
Be smart when playing with the sun! Be it a room flooded with light in winter or a shaded terrace on a hot summer's day – with the ONYX.HOME control system, it has never been easier to control the daylight and make optimum use of it within your own four walls. Digitally, automatically and in real time!



### Control system for offices, etc.

Whether it's an apartment building or a large office complex – ONYX.PRO from HELLA has the energy balance for buildings of any size under control. ONYX.PRO provides a uniform façade appearance and protects the sunshade from the influence of the weather. In coordination with the electrical engineer, HELLA takes over the pre-configuration and commissioning of the sun protection systems. More sun protection – less air conditioning!

# The components



## ONYX app

All products at a glance on your smartphone! With the ONYX app, controlling the sun protection is child's play – whether you're at home or on the go. Shading devices can be controlled and configured in the app using individually adjustable scenarios and programmes based on the current weather conditions.

## ONYX.CENTER

The centre box is the interface between the smartphone and the individual control units. It enables wireless, encrypted communication in both directions to capture the current position of the sun protection in real time and display it in the app.



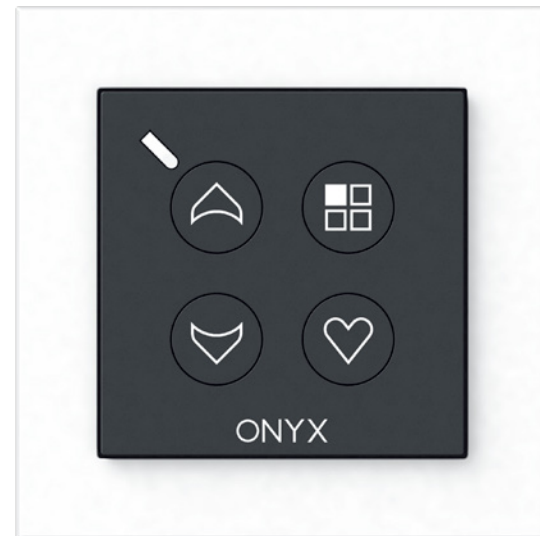
## ONYX.WEATHER

The wind and sun sensor captures weather factors such as temperature, solar irradiation and wind force right on the façade.



## ONYX.CLICK

The sun protection products are very easy to operate using the hand-held radio transmitter ONYX.CLICK and the wall-mounted radio transmitter ONYX.SWITCH. Several shading devices can be combined and grouped into five channels. Different colors indicate which product is being controlled. The wall-mounted and hand-held radio transmitters can be used independently or as an extension of the centre box. The wall-mounted radio transmitter ONYX.SWITCH is available with or without a frame and is compatible with all common standard switch designs.



## ONYX.SWITCH



## ONYX.TAG wind

The wind sensor measures the vibrations on the awning so as to retract it automatically if certain threshold values are exceeded.



## ONYX.TAG sun

The sun and brightness sensor continuously measures the current brightness and controls shading systems fully automatically. The sensor provides the ideal glare and heat protection for indoor and outdoor use.



## ONYX.TAG temperature

The temperature and humidity sensor monitors the temperature indoors and frost outdoors, and controls the sun protection according to set values.

# THE WORLD OF HELLA





The HELLA headquarters and plant  
Abfaltersbach, East Tyrol

Alois Kraler  
Founder of HELLA

## PREMIUM QUALITY FOR GENERATIONS

HELLA was founded in 1959 in Abfaltersbach, Austria. Since then, the company has been in the hands of the Kraler family and from a small family business in the East Tyrolean mountains it has become one of the leading companies in sun and weather protection technology. As one of the few full service providers in the market, HELLA attaches great importance to everything being produced in-house. Technology, production, consulting and also installation if required – premium quality is the benchmark here. All products are manufactured individually to measure, and the in-built components are designed for robustness and long service life.

### A look at the whole room

Venetian blinds, roller shutters, awnings or pergolas – sun protection systems from HELLA are more than just smart shade providers. The intelligent systems play with light and shade and create individual spatial experiences. With the products made by this premium provider from Austria, you can control your personalised daylight profile in all internal and external spaces. Over and above that, the shading systems from HELLA also help in reducing energy consumption when equipped with weather sensors.

# SUSTAINABILITY AT HELLA

For HELLA, sustainability is more than just a buzzword – it's a commitment to a holistic attitude and has been practised by the owners for decades.

Consistently acting in a sustainable way means acting in a manner that is environmentally friendly, economical and socially sustainable. The company maintains long-term relationships with customers, suppliers and employees and continuously minimises the environmental footprint of its products. Thus, for example, the slatted hinges of the outdoor blinds have recycled aluminium content of 80 per cent. HELLA is just as sustainable as its products: the company produces more energy at its headquarters than is consumed thanks to its own hydroelectric power plant and participation in a biomass heating plant. The energy management principle "Saving, generating and stocking energy" defined at the company headquarters is constantly being extended to further business locations.

## HELLA's contribution to climate protection

The most sustainable solution for a comfortable indoor climate and protecting against the summer heat is automated outdoor shading. The main function of external sun protection is to reflect the sun and ensure that the heat does not penetrate into the interior. With the ONYX control system developed by HELLA, which can be connected to all common smart home systems, the sun protection systems become even more sustainable and allow the sun to get in only where it is wanted.

The system can also react to the weather in order to optimally adapt the sun and heat protection to the conditions. The ONYX weather sensors detect influences such as wind speed, sun intensity and temperature on the façade. The obtained data can then be used to customise the products to residents' needs.

## Smart networking is the future

By integrating sun protection products into the smart home, they also have enormous potential to have a positive impact on a building's energy footprint. Maximum comfort, energy savings and sustainability can be achieved by networking with other building control systems such as those for heating or ventilation. The ONYX control system is interface-compatible with international systems such as Alexa or Google Home and connects to all other types of building services. Smart home integration focuses on residents and their use of space, including their daily routine and preferences.

## Energy saving with sun protection

Depending on the building, age and size of the window area, up to 30 per cent of heating energy can be saved using automated, external sun protection, like roller shutters. Savings of up to 50 per cent can also be achieved when cooling. Sun protection products have a clear advantage over air conditioning systems when it comes to sustainability. The latter not only consume energy, but also directly contribute to warming the urban space through warm exhaust air. Intelligent sun protection systems thus make an important contribution to CO<sub>2</sub> savings and climate protection.

# EVERYTHING FROM A SINGLE SOURCE

Thanks to its innovative strength, HELLA is a full service provider and offers a broad portfolio of customised sun protection solutions. Premium quality is the benchmark here. Be it refitting, refurbishment or new construction – HELLA has the right solution for every building project!

## Terrace & Garden



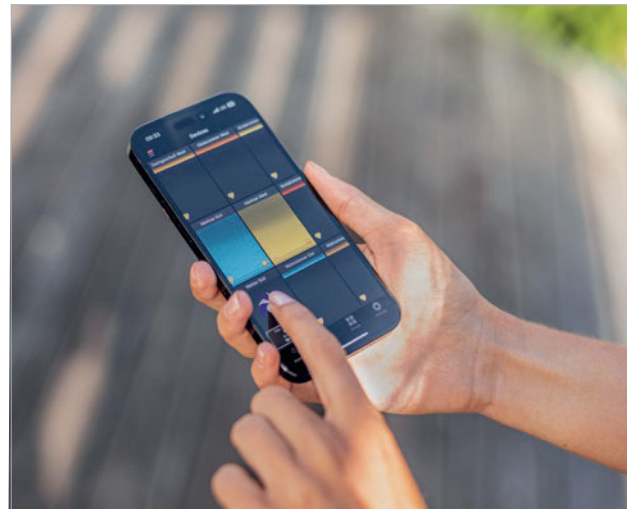
## Window & Façade



## Build & Renovate



## Control devices



**HELLA**

**Brochure | External Blinds & Venetian Blinds**  
7500 0001\_EN 02/2025

Subject to technical, typesetting and printing changes and errors.