



SCHÜCO
Premium Partner

awilux
AMAZING LIFE QUALITY



**PVC windows
and sliding systems**

Awilux Poland – we act with passion

Awilux Polska is a team of qualified specialists who create every day, with technical precision, window and door constructions to meet the expectations of our customers. A wide range of technological solutions and a rich color palette means that windows can be adapted to any aesthetic environment and give the building the right character. Our goal is to promote solutions aimed at increasing safety and energy efficiency.

We have been operating on the market since 2006, basing our production on German SCHÜCO technology. This means solidity, rigorous adherence to the highest technical standards and precision of execution. We attach great importance to timeliness and efficient execution of orders. This is ensured by our modern production lines and experienced staff. We are successfully building a network of showrooms on the Polish market. All our partners take part in a regular process of training in SCHÜCO systems and modern assembly techniques. Our aim is to remain an important and reliable partner in the implementation of your plans and investments for many years to come.

We will meet even the most complex projects.



WINDOW

The window is one of the most important elements of a building. Advanced technologies make it possible to achieve ever better energy-saving and thermal insulation parameters. The choice of a window profile is one of the basic criteria of future satisfaction, comfort and lower bills for heating your home.

In our offer you will find solutions combining classics with modernity, allowing to achieve unusual shapes of windows with parameters which meet expectations of all types of buildings, including passive buildings.

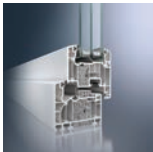


1.



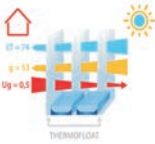
Original, aluminum handles with modern design and extraordinary durability. Optionally they can be equipped with "audible safety element" patented system blocking the possibility of opening the window from the outside. Available in Basis, Acoustic and Design versions.

2.



German Schüco profiles, meeting the most stringent standards of energy-efficient and passive construction.

3.



SunEnergy+ glazing package with low emissivity glass.

4.



The latest generation of the fitting is equipped with 4 anti-theft strikers screwed to the steel reinforcement of the frame.

5.



Mushroom locking system with excellent burglary resistance, with the additional possibility of self-adjustment of the clamping force.

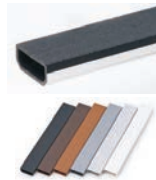




6. Mechanism with 5-step tilt function to help adjust the ventilation intensity.



7. Thin, aesthetic and virtually unnoticeable corner joint technology available with the latest production lines.



8. Warm inter-pane spacer available in many color versions additionally improves thermal insulation parameters of the window and prevents the effect of glass dew.



9. Wide range of wood-based renoliths and aluminum cladding available in all RAL colors.



10. Aesthetic gasket at the bottom of the frame for easy cleaning inside the window frame.

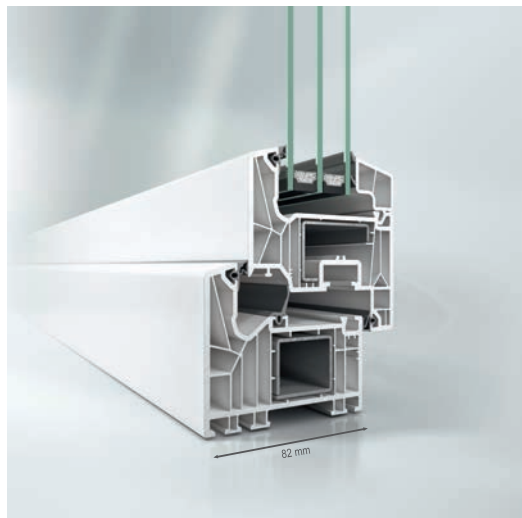
Schüco LivIng 82 MD/AS

This is a proposal that meets the highest criteria for energy efficiency, tightness, functionality and design. Seven heat-insulating chambers with the installation depth of 82 mm and three innovative gaskets made of flexible EPDM material make it possible to enjoy a modern window combining high technical and aesthetic parameters.

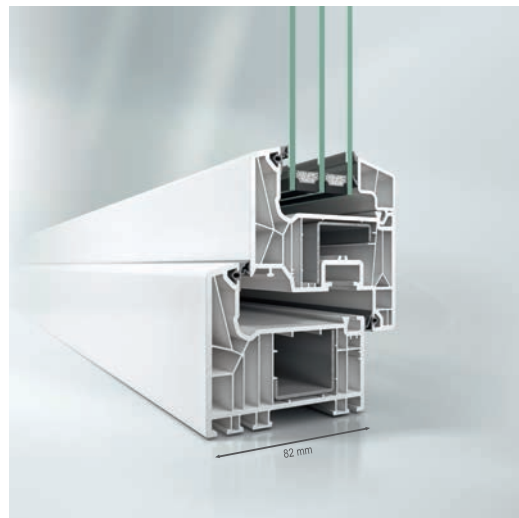
Thanks to these advantages the windows based on the LivIng system can be installed even in rigorous passive houses. High flexibility of the material allows you to enjoy the functionality of the window for many years without having to replace the seals. In addition, the low folding height of the frame and sash (120 mm with standard folding) emphasizes the neat appearance and provides good lighting of the room.

7-chamber profile

Schüco LivIng 82 MD



Schüco LivIng 82 AS



$$U_w = 0,74 \text{ W/m}^2\text{K}^*$$

$$\text{U-Factor} = 0.13 \text{ BTU/hr-ft}^2\text{-}^\circ\text{F}^{**}$$

*Parameter calculated for a reference window 1230 mm*1480 mm, $U_g = 0.5$, with Multitech Premium Edge warm frame, frame 9411 70 mm with closed steel 20271700 and sash 9431 83 mm with steel 20272500.
**Uw-Value is based on the ISO/Passive House thermal performance rating program.

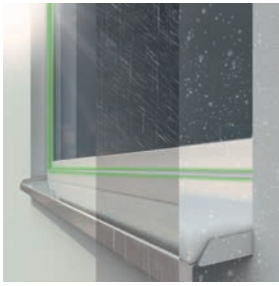
$$U_w = 0,77 \text{ W/m}^2\text{K}^*$$

$$\text{U-Factor} = 0.14 \text{ BTU/hr-ft}^2\text{-}^\circ\text{F}^{**}$$

*Parameter calculated for reference window 1230 mm*1480 mm, $U_g = 0.5$, with Multitech Premium Edge warm frame, frame 9421 70 mm with closed steel 20271700 and sash 9431 83 mm with steel 20272500.
**Uw-Value is based on the ISO/Passive House thermal performance rating program.



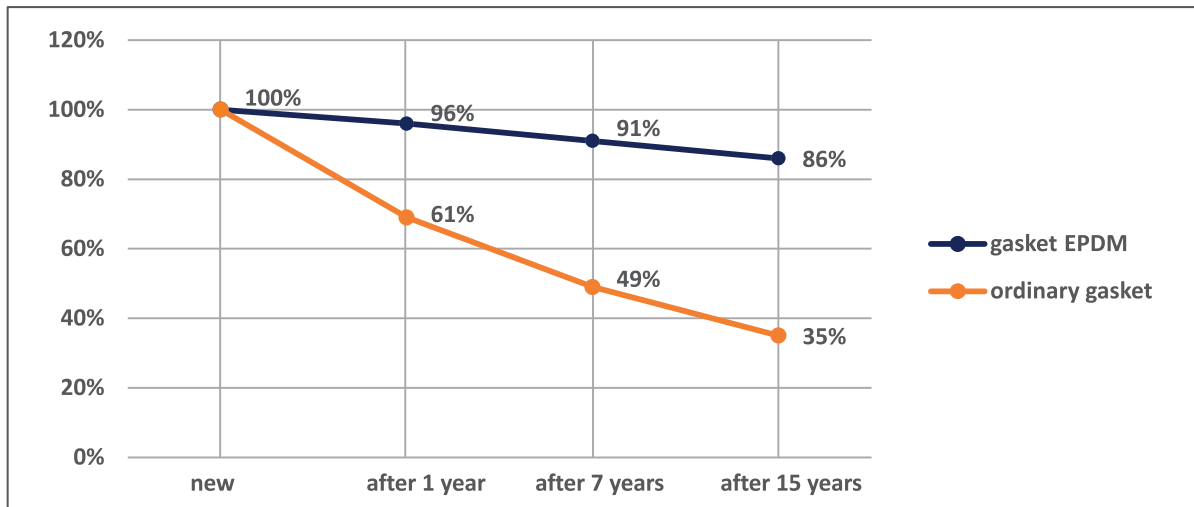
Meets the requirements of the Institute of Window Technology ift Rosenheim for Passive Construction ROSENHEIM for the variant with middle seal.



EPDM has been used for over 50 years in industry and medicine. Numerous tests to which it has been subjected, clearly show that the use of EPDM in window and door joinery allows for the highest tightness, and thus resistance to cold, noise and wind. For householders this means comfort of use and full satisfaction for many years.

A comparison of the durability of Schüco EPDM gaskets and other gaskets clearly shows that high-quality EPDM material remains highly elastic for a long time. A gasket made from another material loses elasticity significantly already in the first years of use and gradually becomes more and more brittle and fragile. After about 7 years, the seal will have lost about 50% of its elasticity.

Wear level of EPDM gasket and ordinary gasket



Energy saving with Schüco Living, it's easy!

- 7-chamber profile design with optimized chamber geometry and 82 mm installation depth, providing excellent thermal insulation parameters,
- Factory inserted EPDM thermo-weldable gaskets of very high quality into the profile, providing optimum protection against wind, rain, and noise,
- MD system made in three-seal AquaStop technology,
- With Chromatec warm frame as a standard,
- Optimally selected glazing package (up to 52 mm) allows acoustic tightness at the level of 47dB, which allows you to find at home the desired peace and quiet,
- Burglar resistance is in accordance with DN EN 1627 (RC2). Thanks to the high strength of plastic (high-impact PVC), increased depth of installation and appropriately selected hardware, burglars have a hard time,
- Original, aluminum handles with modern design and extreme durability,
- The possibility of using AwiKids fittings, allowing children only tilt the window,
- Each window equipped with 4 anti-burglary catches increasing safety,
- System of 8-angular locking mushrooms additionally protects household members and gives possibility of self-regulation of sash closing force,
- Narrow profiles, in standard 120 mm, guarantee optimal access of light,
- Classical geometry with unflush sash contour,
- Diversified appearance of profiles thanks to the rich palette of metallic colors,
- Aesthetic light grey seals in white profiles, black seals in veneered profiles,
- Aesthetic core in profiles ensuring harmonious appearance: dark grey in anthracite and caramel in wood-like profiles.





Schüco Corona Living Alu Inside

A top product. Created for those who desire the latest and most advanced technological solutions, combined with refined aesthetics.

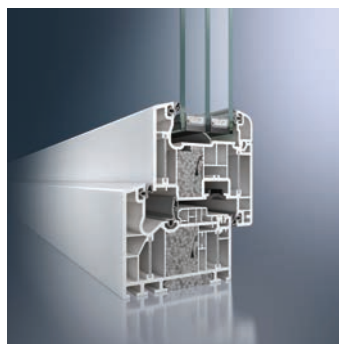
The window is constructed on a 7-chamber profile, and is successfully used in passive houses, where the most important aspect is energy savings.

Certificate of the German Institute for Passive Houses in Darmstadt, Germany, confirms the fulfillment of rigorous standards, created for passive construction.

Modern, yet classic shape of the wing emphasizes its uniqueness, and a wide range of colors and above-average equipment make this window an exclusive element of any interior.



- Patented PVC Schüco Living Alu Inside* profile system reinforced with aluminum partitions, certified by Passivhaus Institut Darmstadt,
- 82 mm frame width, 82 mm sash width,
- 7 thermo-insulated chambers in the frame and sash with the possibility of using additional thermal inserts increasing the thermal parameters of the woodwork,
- The windows are made with the use of three seals AquaStop technology increasing insulation and acoustic parameters, in standard with the Sunenergy+ package,
- Warm inter-pane frame additionally increases thermal insulation parameters of the window and prevents the effect of glass dew,
- Standard installation of modern fittings with increased to 100 kg sash weight,
- Each window equipped with 4 anti-burglary catches increasing safety,
- System of 8-angular locking mushrooms additionally protects the occupants and gives the possibility of self-adjustment of the sash closing force,
- Original, aluminum handles of modern design and extraordinary durability. Optionally, they can be equipped with an "audible safety element". - patented Akustic system, blocking the possibility of opening the window from the outside,
- AWI-Kids package available which blocks the opening and only allows children to tilt the window
- Wide range of wood-like renolitres and aluminum cladding, available in all RAL colors.



$$U_w = 0,69 \text{ W/m}^2\text{K}^*$$

$$U\text{-Factor} = 0.12 \text{ BTU/hr-ft}^2\text{-}^\circ\text{F}^{**}$$

*Parameter calculated for a reference window 1230 mm*1480 mm with Sunenergy+ glazing package and thermal inserts.

**Uw-Value is based on the ISO/Passive House thermal performance rating program.

Schüco Corona CT 70

CT 70 - is a very good window constructed on a 5-chamber profile. It is an ideal choice for those of you who look for a very good quality combined with a friendly price.

The sash is available in two variants to satisfy all technological and aesthetic needs. Providing very good thermal insulation, it also ensures good static performance, making it possible to construct large glazing's.

- 5 thermo-insulating chambers in the frame and sash,
- Energy-saving **SunEnergy** glazing package $U_g = 0,6$, $U_g = 0,7$, or $U_g = 1,1$,
- The windows are thermally insulated and prevent the effect of glass dew,
- Standard installation of modern fittings with increased to 100 kg sash weight,
- Possibility of using a system of invisible, hidden hinges with sash weight up to 150 kg,
- Each window equipped with 4 security catches screwed to steel,
- System of 8-angular locking mushrooms additionally protects the occupants and gives the possibility of self-adjustment of the sash closing force,
- Original, aluminum handles with modern design and extraordinary durability. Optionally, they can be equipped with an „audible safety element“ - patented Akustic system, blocking the possibility of opening the window from the outside,
- **AWI-Kids** package available which blocks the opening and only allows children to tilt the window,
- Wide range of woodgrain and aluminum cladding available in all RAL colors.



$$U_w = 0,95 \text{ W/m}^2\text{K}^*$$

$$U\text{-Factor} = 0.17 \text{ BTU/hr-ft}^2\text{-}^\circ\text{F}^{**}$$

*Parameter calculated for a reference window size of 1230 mm*1480 mm with **SunEnergy+** glazing unit.

**Uw-Value is based on the ISO/Passive House thermal performance rating program.



Classic window



Rondo window

Comparative table of windows

LIVING 82

LIVING Alu Inside

CT 70

THERMAL INSULATION PROPERTIES					
Sash width [mm]	82		82		70
Frame depth [mm]	82		82		70
Number of thermo-insulated chambers in the sash	7		7		5
Number of heat-insulating chambers in the frame	7		7		5
3-gasket system AquaStop	✓		✓		-
Thermal insulation insert in frame and sash	-		+		-
Warm plastic frame	✓		✓		✓
Window slat with additional seal	✓		✓		✓
System corner connectors of the middle seals	✓		✓		-

U _w coefficient of thermal transmittance of the reference window 1230*1480 [mm] for individual glazing packages					
SunEnergy+ glazing U _g = 0,5 W/m ² K	0,74		0,69		-
SunEnergy glazing package U _g = 0,6 W/m ² K	0,82		0,79		0,95

FUNCTIONALITY					
Number of anti-theft strikers in UR sash	4		4		4
Multi-stage tilt mechanism	✓		✓		✓
Handle misplacement blockade	✓		✓		✓
Sash guiding slide	✓		✓		✓
Bottom hinge with additional regulation	✓		✓		✓
Aluminum handle	✓		✓		✓
UR sash weight up to 100 kg	✓		✓		✓
Concealed hardware (up to 150 kg)	+		-		+
Balcony with low threshold	+		+		+
Pivot window system	-		-		+
Warranty period 5 years	✓		✓		✓

ESTHETICS					
Dust seal in the frame	+		+		+
Thin-seal technology in veneer windows	✓		✓		✓
Grey seals in white windows	✓		✓		✓
Black seals in 1 and 2 ply veneered windows	✓		✓		✓
Aluminum sill protector in the balcony	+		+		+
Number of standard colors	33		33		33
Aluminum attachment cover system in any RAL color	+		+		+
Low thermally insulated balcony threshold	+		+		+
Metallised AutomotiveFinish coating	+		+		+
Outer stops replaced by UR hardware on Turn-Only sashes	✓		✓		✓

¹ applies to wings on veneered windows

✓ standard equipment

+ additional equipment

- not available

SLIDING SYSTEMS

The most important thing is what is behind the window...

For a few years now, large glazing's have been a frequent and natural choice for people, who fulfill their dreams of having their own home. Comfortable, spacious, with a captivating view.

Lighted rooms have very good influence on our health and mood. Regardless of the season we are close to nature, and we feel a part of it. Sliding doors are installed not only in newly built buildings. They are also designed in older houses, which thanks to them gain an interesting and attractive look and allow for modern arrangement.

- We have based the production of our sliding and terrace doors on the German Schüco technology,
- We manufacture both lift-and-slide and tilt-and-slide doors in a wide range of sizes,
- A low aluminum threshold with a thermal break equalizes the level between the interior of the house and the terrace,
- It is a solution facilitating independent movement of children, the elderly or disabled people,
- We take care of comprehensive solutions, offering for sliding doors a system of roller blinds and mosquito nets, additionally increasing safety, and comfort of household members.



Schüco LivingSlide

Rooms full of light and phenomenal views? All this is possible thanks to the Schüco LivingSlide PVC lift and slide door system. With a few simple movements, the terrace becomes an extension of the living room.

The Schüco LivingSlide system offers many design possibilities, both in new and modernized buildings.

The system has wings with a depth of 82 mm and is dimensionally consistent with the Schüco Living system, which provides access to a wide range of additional profiles, glazing beads and glazing accessories. The leaf profile uses heat-weldable EPDM gaskets. After welding, they are soft in the inside corners and ensure optimal tightness and therefore warmth.

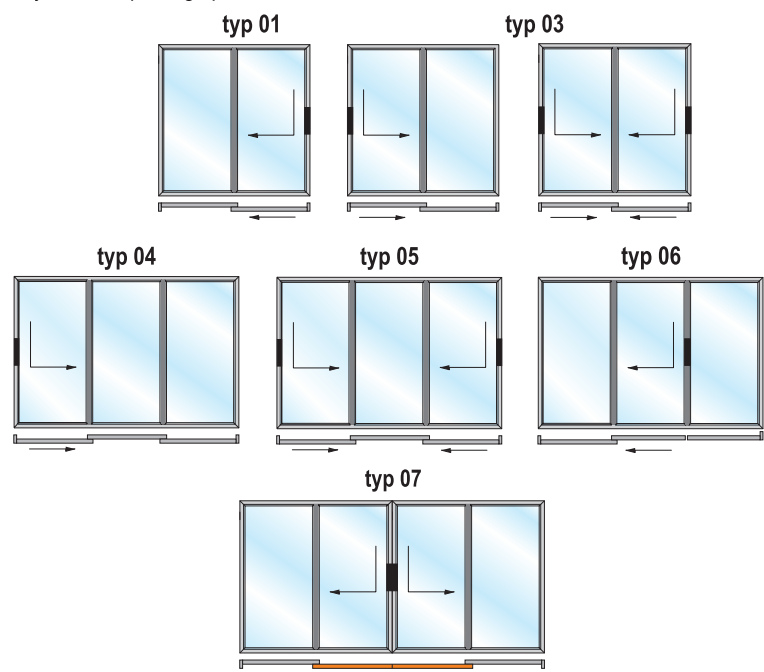
The excellent thermal isolation is also confirmed by a thermally isolated threshold and aluminum reinforcement profiles in the window frame, as well as a special thermal break integrated with additional isolations, which prevents the formation of thermal bridges, water condensation and the formation of drafts.

The system is also distinguished by an attractive design. The narrow central contact zone of the profiles ensures maximum illumination of the interior. Schüco LivingSlide extends the design freedom with a systemic surface finish concept and a wide range of colors.





- protection against noise thanks to optimal sound isolation,
- maximum energy efficiency according to clever design,
- maximum ease of use - even with large components,
- maintenance and care are kept to a minimum according to the use of durable materials,
- installation depth 194 mm, sash 82 mm deep,
- a thermo-insulated threshold and heat-insulated aluminum reinforcement profiles in the frame provide excellent results,
- thermal insulation and optimal course of isotherms,
- low threshold, equalizing the level between the interior of the house and the terrace,
- innovative, durable EPDM gaskets ensure proper functioning and tightness,
- the heat transfer coefficient for the frame is $U_f = 1.3 \text{ W/m}^2\text{K}$,
- a special thermal break integrated with additional insulators prevents the formation "Thermal bridges",
- circumferential sealing at several levels between the sash and the frame of the frame prevents it water condensation and the formation of drafts,
- optional panoramic glazing of the fixed part,
- the possibility of using the handle also from the outside,
- modern fittings in the option of increasing the load capacity of the sash to 400 kg,
- exceptionally transparent SunEnergy low-emission glass packages, the maximum thickness of the glazing is 52 mm,
- as standard with a warm spacer frame,
- a rich palette of available colors in three groups: trend, standard and special colors, as well as aluminum covers,
- aesthetic core for a harmonious look: dark gray, caramel, cream and white,
- system compatible with Awilux roller shutters and blinds *,
- a variety of door opening options:



$$U_w = 0,77 \text{ W/m}^2\text{K}^{**}$$

$$U\text{-Factor} = 0.14 \text{ BTU/hr-ft}^2\text{-}^\circ\text{F}^{***}$$

*Does not apply to overhead shutters with access flap mounted from the bottom inside.

**Parameter calculated for reference window 3500 mm*2300 mm, $U_g = 0.5$.

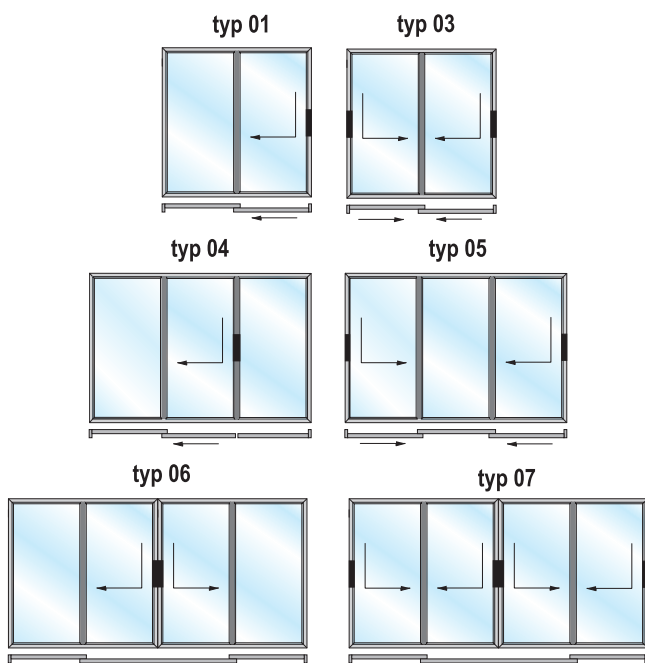
***Uw-Value is based on the ISO/Passive House thermal performance rating program.

HS Schüco CT 70 Easyslide

Ideal lift and slide doors for those seeking a compromise between very good thermal insulation parameters and a reasonable price. Used for exits to the terrace, balcony or winter garden.

- Frame width 168 mm, sash width 70 mm,
- Ideal solution for rooms with large glazing,
- Low aluminum threshold with a thermal break to even out the level between the inside of the house and the terrace,
- It is a solution facilitating independent movement of children, the elderly, or the disabled,
- The possibility of using the energy-saving **SunEnergy**, $U_g = 0,7$, glazing package,
- Warm inter-pane spacer,
- Possibility of using fittings with increased resistance to burglary,
- Modern fitting with option of increased to 400 kg load capacity of the sash,
- Ergonomic and aesthetic handle, additional option to use handle also from outside,
- Special protection against impacts of the sliding sash,
- Wide range of wood veneers, possibility of using aluminum overlays (Aludeckschale) in all RAL colors or veneers from the latest Automotive Finish palette,
- The ideal system for large glazing and panoramic views,
- Maximum frame width is 6500 mm and maximum height 2600 mm*,
- System compatible with roller blinds and shutters,
- Possibility to use a sliding mosquito net,

Variety of door opening options:



$$U_w = 1,1 \text{ W/m}^2\text{K}^{***}$$

$$U\text{-Factor} = 0.19 \text{ BTU/hr-ft}^2 \cdot \text{°F}^{***}$$

*Does not apply to overhead shutters with access flap mounted from the bottom inside.
 **Parameter calculated for reference window 3500 mm*2300 mm, $U_g = 0.7$.
 ***Uw-Value is based on the ISO/Passive House thermal performance rating program.

Sliding doors PSK in Schüco CT 70 and Living systems

Very interesting solution, which is an alternative for balcony doors. Using the PSK system we have the possibility of both tilting and sliding the sash.

- 5 thermal insulation chambers in leaf and frame in Schüco Corona CT 70 doors and 7 chambers in leaf and frame in Schüco Living doors,
- Frame height 78 mm and sash height 103 mm in CT 70 and frame height 80 mm and sash height 110 mm in Living,
- Modern ferrule with sash weight up to 160 kg, with possibility to increase it to 200 kg,
- The fitting supports automatic closing and opening of the sliding doors by turning the handle,
- The possibility of using the Comfort fitting, which allows for 8 mm wide unsealing around the entire perimeter while meeting the requirements of increased burglary resistance class WK1,
- A wide range of wood veneers, the possibility of using aluminum overlays (Aludeckschale) in all RAL colors or veneers from the latest Automotive Finish palette,



PSK Schüco Living

$$U_w = 0,68 \text{ W/m}^2\text{K}^*$$

$$\text{U-Factor} = 0.12 \text{ BTU/hr-ft}^2\text{-}^\circ\text{F}^{***}$$

PSK Schüco Corona Classic CT 70

$$U_w = 0,91 \text{ W/m}^2\text{K}^{**}$$

$$\text{U-Factor} = 0.16 \text{ BTU/hr-ft}^2\text{-}^\circ\text{F}^{***}$$

*Coefficient for a door size 3500 mm*2300 mm with glazing $U_g = 0,5$.

**Coefficient for door size 3500 mm*2300 mm with glazing $U_g = 0,6$.

***Uw-Value is based on the ISO/Passive House thermal performance rating program.



Schüco AutomotiveFinish

Schüco AutomotiveFinish's proprietary coating technology is an innovative color process for shaping the appearance of plastic profiles. The metallic color shades were developed in cooperation with coating specialists from the automotive industry, taking into account the highest technical requirements for color reproduction and weather resistance.

The new technology makes it possible to apply metallic gloss colors and selected RAL.EFFECT colors in unprecedented shades. The vividness of the individual colors is achieved through the use of special pigments, which at the same time provide weather resistance and optimum heat absorption properties. In order to achieve a modern visual effect, the gloss levels have been adapted to specific colors.



Veneers PVC Metallic gloss

Schüco AutomotiveFinish is an efficient and environmentally friendly coating technology. The waste-free AutomotiveFinish coating production process is significantly more energy-efficient compared to other surface finish technologies.

Schüco AutomotiveFinish technology offers unprecedented excellent surface quality and variety in shaping its appearance on the exterior and interior. The color palette includes 9 colors with metallic shades for interior and exterior surfaces.

From the outside and inside



Metallic Black



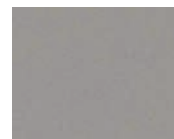
Dark Grey



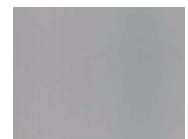
SAF-DB 703



SAF-DB 703 Line



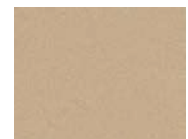
SAF-RAL 9007



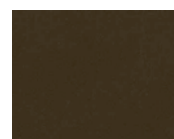
SAF-RAL 9006



Light Silver



SAF-RAL 140-M



Deep Bronze

GLAZING

SunEnergy oraz SunEnergy+

The **SunEnergy+** glazing package available from **Awilux Polska** has excellent thermal insulation parameters, an unprecedentedly light and neutral color and exceptional transparency. Thanks to all these parameters, householders in buildings with installed **SunEnergy+** glazing can enjoy perfectly illuminated rooms. This is extremely important in our temperate climate. Well-lit rooms have recently become one of the leading architectural themes. There are various additional solutions that allow you to enjoy well-being and health in your own home at any time of the year. **SunEnergy+** glazing is precisely such a solution

Comparison of light and energy transmission parameters

	SunEnergy+	Standard glazing	SunEnergy	Standard glazing
U_g coefficient	0,5	0,5	1,1	1,0
Package construction	4/18/4/18/4	4/16/4/16/4	4/16/4	4/16/4
Light transmittance coefficient L_T	74	57	84	71
Energy transmittance g	53	35	64	50



MULLIONS

Window bars

In order to make the appearance of our house even more attractive, a corresponding division of the glass surface can be used, which gives the building a special character.

This division emphasizes the building's characteristic features or alters the visual appearance of the building. In our offer we have bars between the discs: 8 mm, 18 mm, 26 mm and 45 mm, Viennese bars and adhesives with widths: 27 mm, 33.5 mm, 44.5 mm and 64.5 mm. The available color spectrum makes it possible to adapt the bars to the most different window colors in order to create a uniform whole.



SAFE HOME, SAFE FAMILY

A home is a place associated with security, a cherished value that determines comfort in life. The autumn and winter period, with dusk falling quickly, lasts several long months. This is the time of high activity of burglars.

We live actively and spend more and more time outside the house. We work intensively and on weekends, family trips recharge our batteries. To enjoy life, it is worth investing in anti-burglary windows. Thanks to this your beloved dog will not have to guard the house but will become a companion for carefree fun. According to research, uninvited guests usually enter single-family houses through windows and balcony doors with a low standard of burglarproof equipment. For maximum security, we offer you packages tested by research institutes, taking care of the safety of the house and its inhabitants:

AWI Safe/(WK1)

- Circumferential fitting with 4 hooks in anti-burglary standard
- Standard handle with key 50 Nm

AWI Protect/(RC1N)

- All-round fitting with 4 hooks in anti-theft standard
- Standard handle with key 100 Nm
- Anti-drilling insert

AWI Guard/(RC2N)

- Full circumferential fitting in anti-burglary standard
- Minimum 7 anti-theft strikers in each sash
- Standard 100 Nm handle with key
- Anti-drilling insert
- Security system preventing movement of the sash in the frame
- Glued basic glass (certified glue)
- Reinforced steel

AWI Guard+/(RC2)

- Full circumferential fitting with hooks in anti-theft standard
- Minimum 7 anti-theft strikers in each sash
- Standard 100 Nm handle with key
- Anti-drilling insert
- Security system preventing movement of the sash in the frame
- Anti-burglary glass A3/P4 (certified glue)
- Reinforced steel



MONITORING

All offered packages can be additionally equipped with special sensors, which are connected to the home alarm system. The sensors do not interfere with free movement in the house, they even allow you to open the window while you sleep, for example, even if the system is on. The alarm will sound only when the sash is opened.

Custom solutions

AWI-Kids SAFE+

Safety of our children is the highest value. Home is a special place where we should create conditions for them to play without danger. **AWIKids** is a solution for children's rooms, kindergartens and institutions where there are children.

In this version of the fitting, turning the handle tilts the sash, and only after turning the handle to the vertical position, the function of full window opening is activated. An additional safety feature is the special handle, which is locked with a keyed cylinder.

The **AWI-Kids SAFE+** package uses laminated safety glass. This is a type of glass which does not shatter when broken, and at the very point of impact there is a weave of radially spreading cracks. Due to the use of such durable glass, children playing with a ball or other favorite toy will not lead to any damage or injury to their health.



Low threshold for balcony doors

The low threshold of balcony doors is an extremely convenient solution that eliminates the differences in level between the interior of the house and the terrace.

It allows for a full connection of indoor and outdoor space. For children, the elderly and the disabled, it is a condition of free movement in the building.



Ornamental glass

There are rooms in which we want to keep our privacy, however it is also important to have daylight which will reach them. Such rooms certainly include a bathroom, pantry, hall or utility room. How to reconcile these needs?

A good choice is a window with ornamental glass. It not only provides intimacy and allows us to enjoy the daylight but with the right choice it gives an interesting atmosphere to the room. Large selection of ornamental motifs will satisfy the most sophisticated taste of both people with traditional tastes and those who go hand in hand with the avant-garde.



Altdeutsch



Atlantic



Chinchilla



Crepi



Decormat



Delta



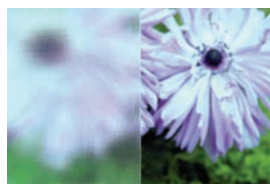
Flutes



Kathedral



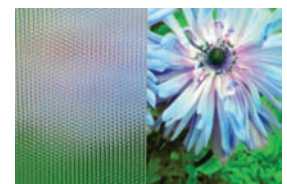
Kura



Listral-K



Master-Carre



Master-Point



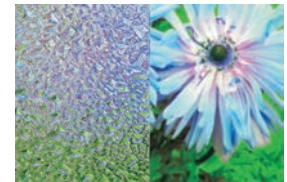
Niagara



Screen



Silvit



Waterdrop

Door handles

Both comfort and safety are the features characterizing our windows. We care not only about what is most visible, we are equally careful with the details. We know that they largely determine your satisfaction and comfort.

We use Schüco handles in the Design, Basis and Akustic versions, which are elements of very high quality, also in terms of aesthetics. The range of colors and interesting designs allow the handle to match the color of the window, with which it forms a perfect whole.



Schüco Akustic



Schüco Design



Schüco Basis with key



Schüco Design with key



www.awilux.com

